



# LINE UP & SPECIFICATION

# PIPING ARRANGEMENTS

240kW(210,000kcal/H)~1500kW(1,290,000kcal/H)の処理量に対応する豊富なラインナップを用意しており、利用頂く上での様々な要求に柔軟に対応可能です。  
We provide various models from 240kW (210,000kcal/H) to 1500kW (1,290,000kcal/H) in order to meet your flexible demand.

SPEC	TYPE	UNIT	CAPACITY			MOTOR CAPACITY				SIZE	EXH. GAS DUCT DIAMETER	WEIGHT
			COMBUSTION	WASTE OIL	SOLID WASTE	BNR.	I.D.FAN	PRIMARY AIR FAN	W.O.PUMP			
			MJ/H kcal/H	kg/H		kw × pole			mm	JIS 5K	≒kg	
OSV	OSV-240SAI		860	26	20	0.4 × 4	2.2 × 4	ON BNR.	ON BNR.	2255 × 1335 × 2042(1950)	300A	2350
			210,000									
	OSV-360SAI		1,300	38	30	0.4 × 4	3.7 × 4	ON BNR.	ON BNR.	2255 × 1335 × 2042(1950)	400A	2400
			310,000									
	OSV-600SAI		2,160	64	50	0.75 × 4	5.5 × 4	ON BNR.	ON BNR.	2525 × 1405 × 2496(2270)	500A	3100
			516,000									
	OSV-900SAI		3,240	97	75	1.5 × 4	5.5 × 4	ON BNR.	ON BNR.	2925 × 1632 × 2956(2710)	600A	4700
		770,000										
OSV-1200SAI		4,320	129	100	0.4 × 2	7.5 × 4	3.7 × 2	0.75 × 4	2890 × 2270 × (2791)	700A	6100	
		1,030,000										
OSV-1500SAI		5,400	161	125	0.4 × 2	15.0 × 4	3.7 × 2	0.75 × 4	3150 × 2270 × (2791)	800A	6600	
		1,290,000										
OSG	OSG-360SDA		1,300	38	48	0.4 × 4	3.7 × 4	ON BNR.	ON BNR.	2525 × 1895 × 2459(2367)	400A	3750
			310,000									
	OSG-600SDA		2,160	64	80	0.75 × 4	5.5 × 4	ON BNR.	ON BNR.	2525 × 1895 × 2714(2488)	500A	3800
			516,000									
	OSG-900SDA		3,240	97	120	1.5 × 4	5.5 × 4	ON BNR.	ON BNR.	2918 × 2002 × 3060(2900)	600A	5600
			770,000									
OSG-1200SDA		4,320	129	160	0.4 × 2	7.5 × 4	3.7 × 2	0.75 × 4	2890 × 2270 × (2791)	700A	7000	
		1,030,000										
OSG-1500SDA		5,400	161	200	0.4 × 2	15.0 × 4	3.7 × 2	0.75 × 4	3150 × 2270 × (2791)	800A	7500	
		1,290,000										

※型式に含まれる数字は、焼却容量をキロワット表示にしたものです。

The figure in the Model indicates the capacity of the incinerator in kW.

※OSV-1200SAI以上、OSG-1200SDA以上はLDファンは別置きとなります。

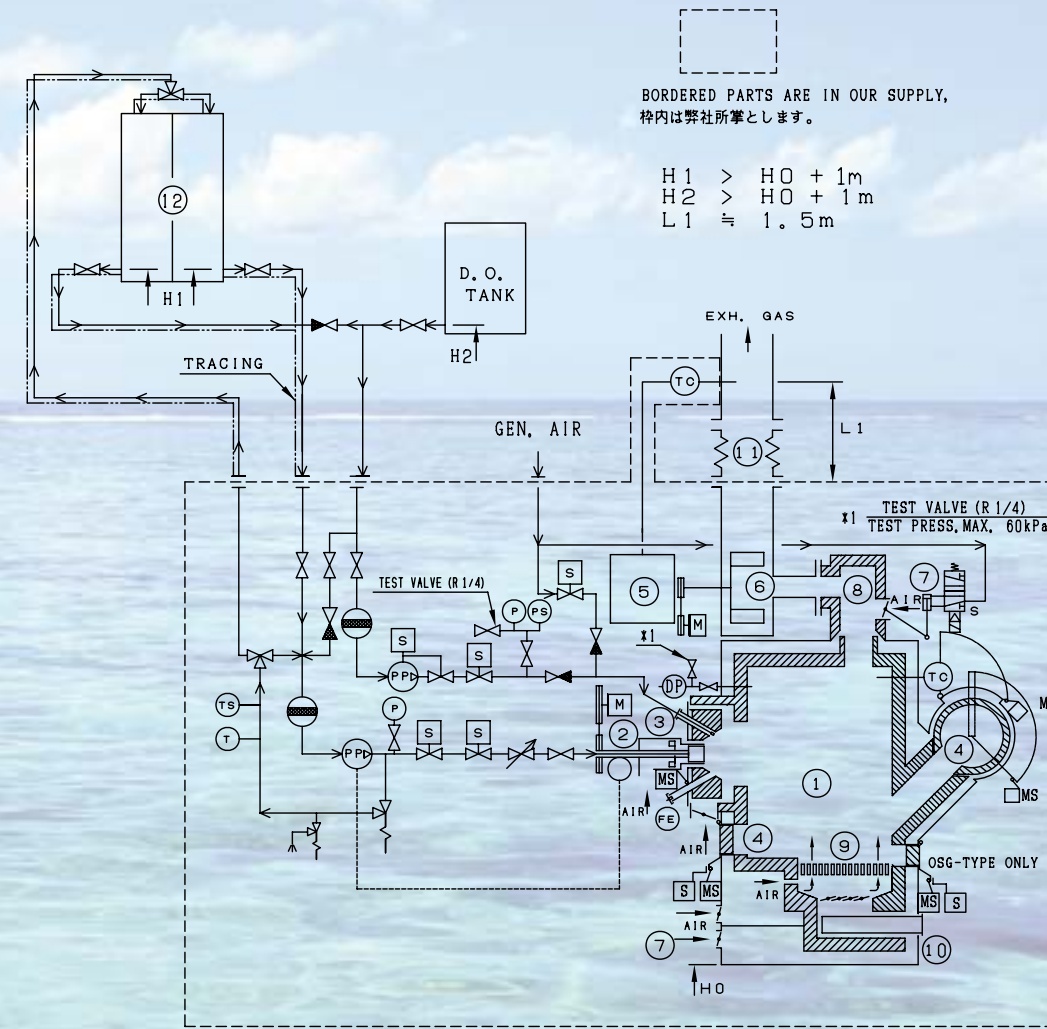
The induced draft fan for the model more than OSV-1200SAI and OSG-1200SDA is installed separately from the furnace.

※日本籍船については若干仕様異なるためスペック等を当社までお問合せ頂きますようお願い致します。

The specification for the incinerator installed on Japanese flag vessel is a little different. Please make inquiry to us for the detail.

※上記製品ラインナップ、スペック等のカタログ記載項目は予告なく変更される場合があります。

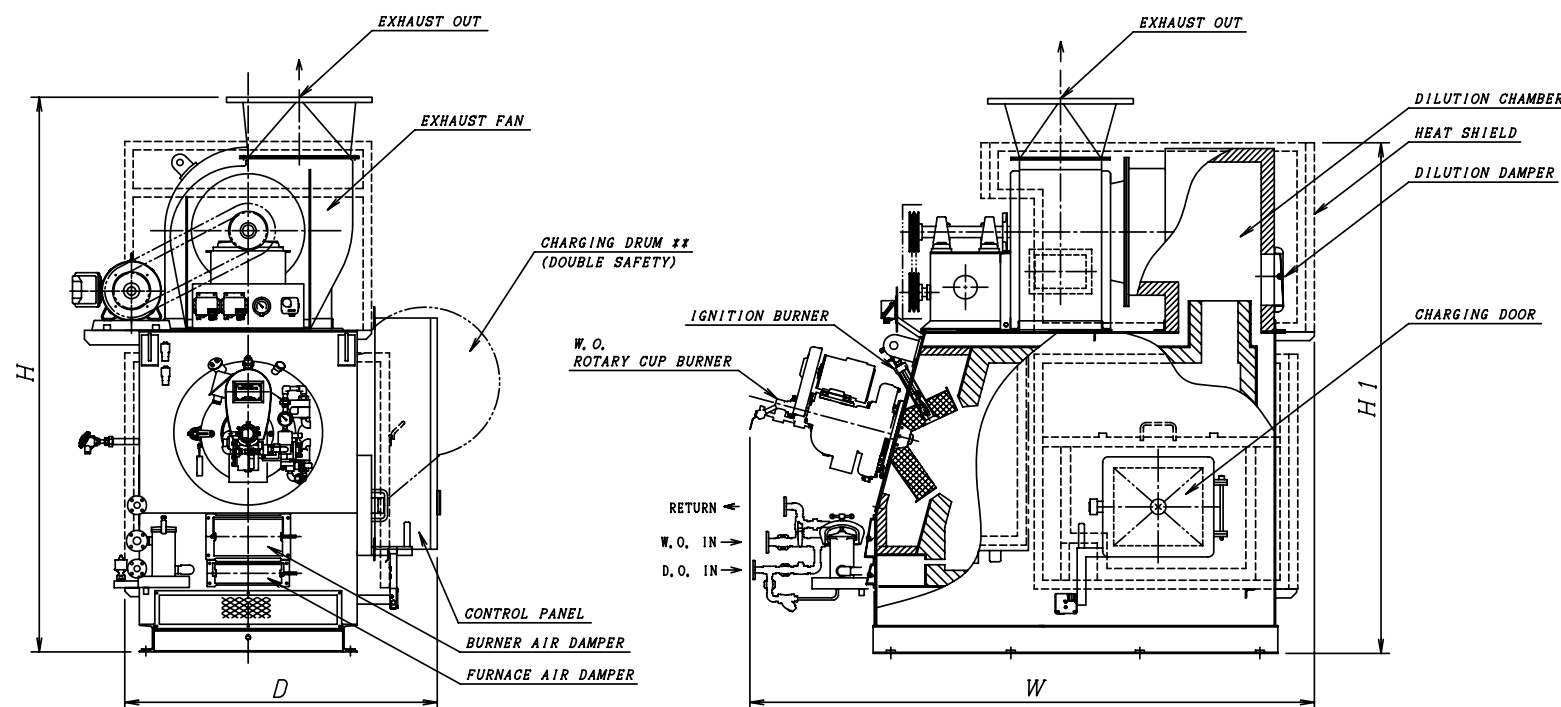
The items mentioned on catalogue may be changed without notice.



No.	NAME
①	FURNACE
②	MAIN BURNER UNIT
③	IGNITION BURNER UNIT
④	CHARGING DOOR (SINGLE or DOUBLE)
⑤	CONTROL PANEL
⑥	EXHAUST FAN
⑦	DILUTION DAMPER UNIT
⑧	DILUTION CHAMBER
⑨	ROCKING GRATE (OSG-TYPE ONLY)
⑩	ASH TRAY (OSG-TYPE ONLY)
⑪	EXPANSION JOINT (OUT OF OUR SUPPLY)
⑫	WASTE OIL TANK (OUT OF OUR SUPPLY)
PP	PUMP
M	MOTOR
S	SOLENOID
T	THERMO-METER
TC	THERMO-COUPLE
TS	THERMO-STAT
P	PRESSURE GAUGE
PS	PRESSURE SWITCH
DP	DIFF. PRESS. SWITCH
FE	FLAME EYE
MS	LIMIT SWITCH

## OSV TYPE

## OSG TYPE



\*\* CHARGING DRUM will be provided upon your request (extra).

