



SEL-T

Partially Enclosed Life- and Tenderboat



Fassmer Life and Tender Boats – the powerful two-in-one!

- ship to shore and shore to ship
- catamaran hull for smooth and comfortable cruise
- high degree of Tender comfort combined with additional lifeboat function
- tender version for up to 121 persons (150 persons lifeboat capacity)

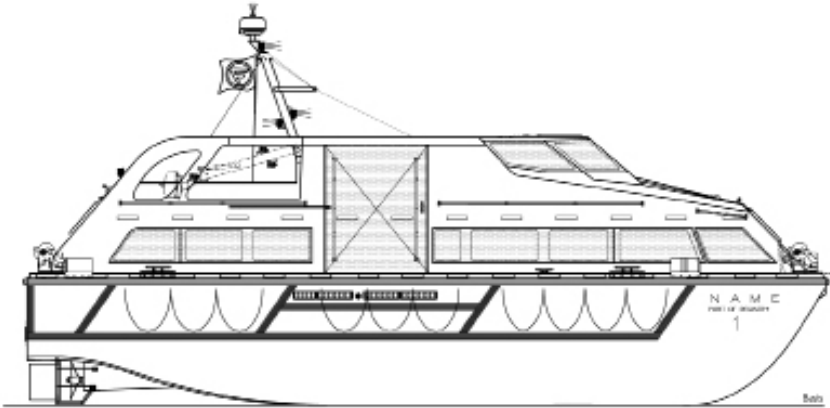
All boats are fully certified according to IMO/SOLAS standards.

SEL-T

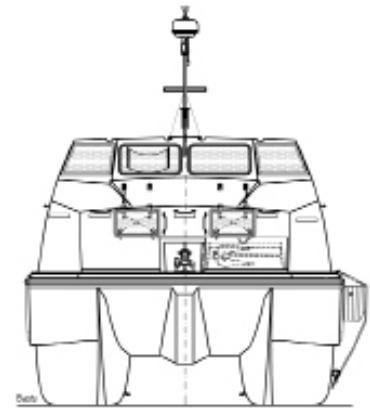
Partially Enclosed Life- and Tenderboat



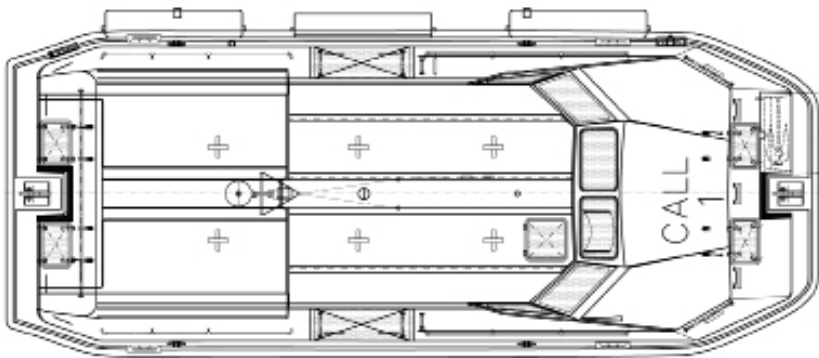
side view



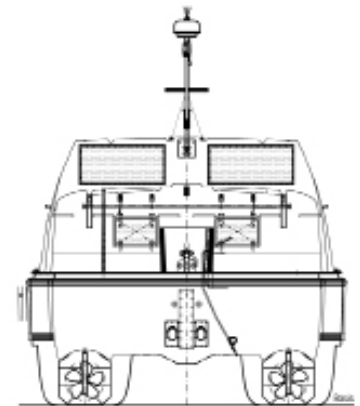
front view



top view



view from astern



Boat Type	SEL-T 11.0	SEL-T 11.7
Length over fenders (mm)	11150	11800
Breadth of hull (mm)	4550	4550
Breadth over fender cushions (mm)	4950	4750
Total height in storage position max. (mm)	3900	3900
Hoisting hook distance (mm)	10250 - 10550	10900 - 11200
Weight without persons (kg)	11,500	12,000
Weight incl. 150 persons (kg)	22,750	23,250
Capacity at tender-service (persons)	up to 110	up to 121
Capacity at lifeboat-service (persons)	150	150
Speed at lifeboat-service (knots)	abt. 10	abt. 10
Speed at tender-service (knots)	up to 11	up to 12

Propulsion: Twin engine, water cooled diesel engine with reverse gear, bronze Propeller, stainless steel shaft

Fr. Fassmer GmbH & Co. KG
 Industriestraße 2
 27804 Berne/Germany
 Phone +49 44 06 942-0
 Fax +49 44 06 942-100
 lifeboat@fassmer.de
www.fassmer.de