



SEL-T 15.5

Partially Enclosed Life- and Tenderboat



Fassmer Life- and Tender boat – the powerful two-in-one!

- the XXL version of tenderboats
- ship to shore and shore to ship
- spacious and comfortable tender operation
- first certified tender for up to 230 persons (267 persons lifeboat)
- stepless floor: easy access also for disabled people

The boat is fully certified according to IMO/SOLAS standards.

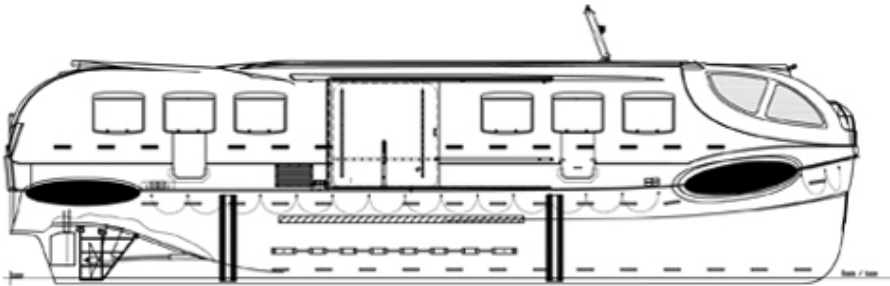
SEL-T 15.5

Partially Enclosed Life- and Tenderboat

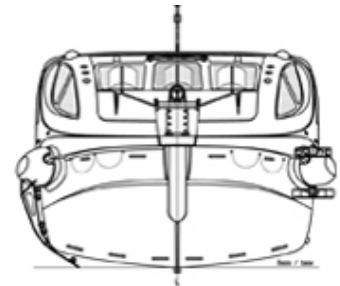


FASSMER

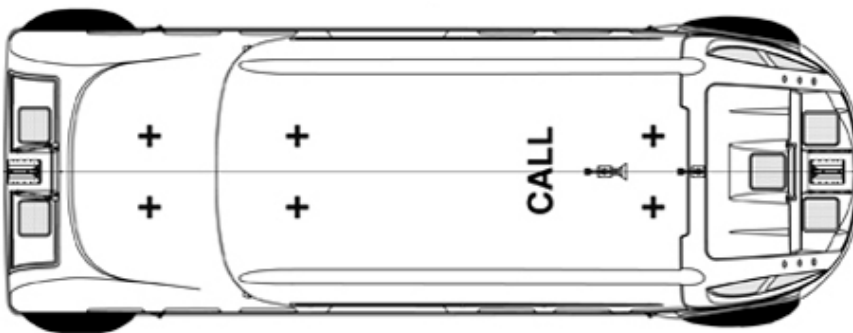
side view



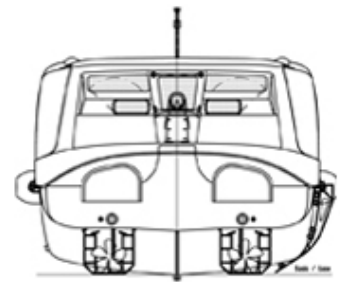
front view



top view



view from astern



Boat Type	SEL-T 15.5
Length over fenders (mm)	abt. 15720
Breadth over fender cushions (mm)	5900
Total height in storage position max. (mm)	abt. 4100
Hoisting hook distance (mm)	14500
Weight without persons (kg)	23,000
Weight incl. 267 persons (kg)	43,025
Capacity at tender-service (persons)	up to 230
Capacity at lifeboat-service (persons)	max. 267
Speed at tender-service (knots)	11
Speed at lifeboat-service (knots)	abt. 10

Propulsion: Twin engine, water cooled diesel engine with reverse gear, bronze Propeller, stainless steel shaft

Fr. Fassmer GmbH & Co. KG
Industriestraße 2
27804 Berne/Germany
Phone +49 44 06 942-0
Fax +49 44 06 942-100
lifeboat@fassmer.de
www.fassmer.de