



SEL-R 8.15

Combined Rescue- & Partially Enclosed Lifeboat



Fassmer Semi Enclosed Lifeboats: Safety at Sea

- person capacity at lifeboat service up to 120 persons

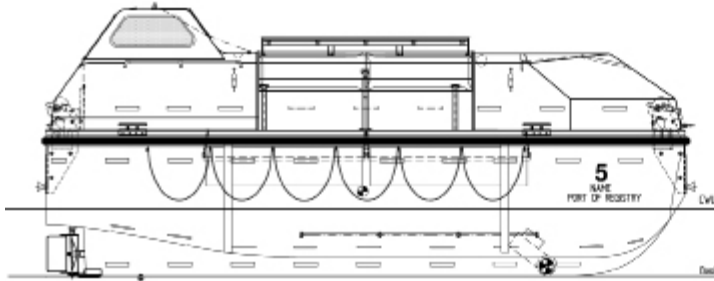
All boats are fully certified according to IMO/SOLAS standards.

SEL-R 8.15

Combined Rescue- & Partially Enclosed Lifeboat



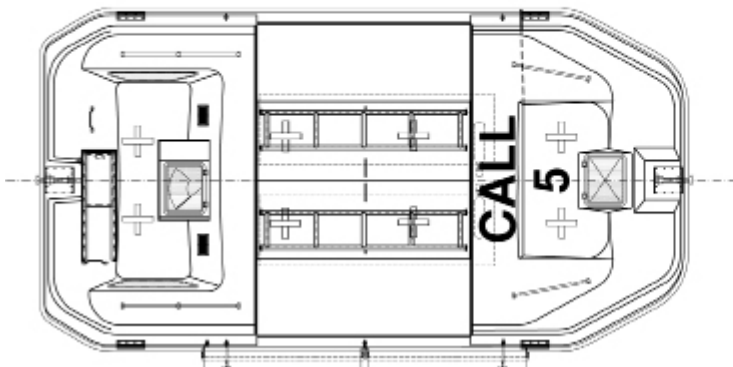
side view



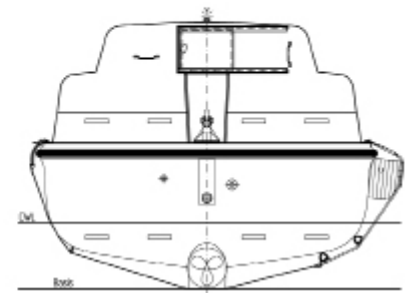
front view



top view



view from astern



Boat Type	SEL-R 8.15 *
Length of hull (mm)	8150
Breadth of hull (mm)	4260
Height of hull (mm)	3510
Hook distance (mm)	7660
Person capacity at lifeboat service	120
Person capacity at rescue boat service	6
Weight fully equipped but without persons (kg)	5,550
Weight fully equipped with 120 persons (kg)	14,550
Speed lifeboat (knots)	6
Speed rescue boat (knots)	9
Towing force (N)	5,790

* combined partially enclosed lifeboat / rescue boat

Propulsion: Twin engine, water cooled diesel engine with reverse gear, bronze Propeller, stainless steel shaft, steering nozzle

Fr. Fassmer GmbH & Co. KG
Industriestraße 2
27804 Berne/Germany
Phone +49 44 06 942-0
Fax +49 44 06 942-100
lifeboat@fassmer.de
www.fassmer.de