



SEL

Partially Enclosed Lifeboat



Fassmer Semi Enclosed Lifeboats: Safety at Sea

- the most compact and shortest lifeboat for 150 persons on the market
- release gear DUPLEX E2, certified acc. to new IMO regulation

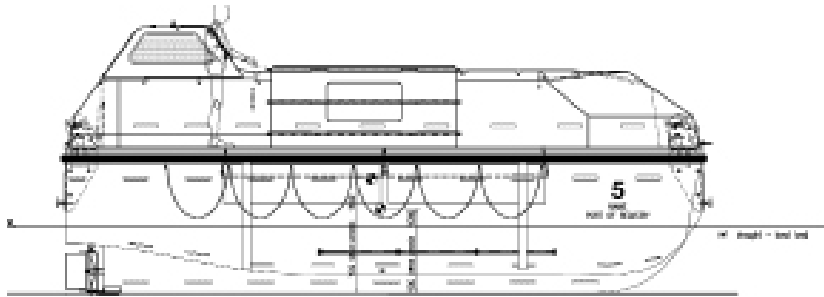
All boats are fully certified according to IMO/SOLAS standards.

SEL

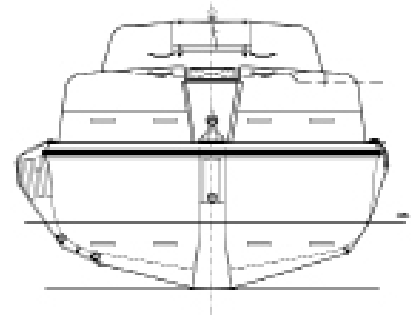
Partially Enclosed Lifeboat



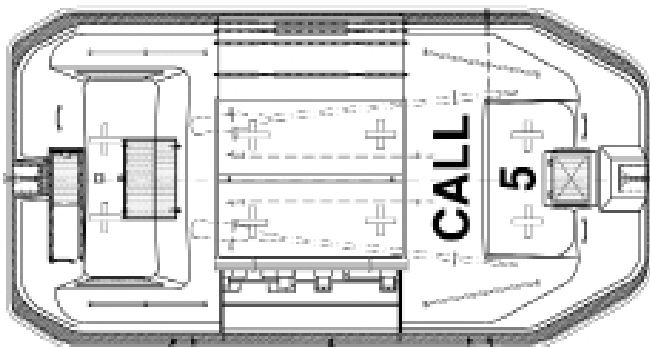
side view



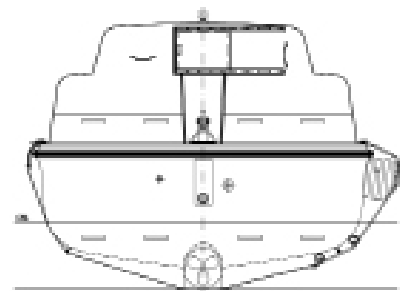
front view



top view



view from astern



Boat Type	SEL 8.15	SEL 8.8
Length of hull (mm)	8150	8800
Breadth of hull (mm)	4260	4260
Hook distance (mm)	7660	8320
Person capacity at lifeboat service	125	150
Weight fully equipped but without persons (kg)	5,500	5,700
Weight fully equipped with 150 persons (kg)	14,875	16,950
Speed (knots)	6	6

Propulsion: Fresh water cooled diesel engine with reverse gear, bronze Propeller, stainless steel shaft, steering nozzle

Fr. Fassmer GmbH & Co. KG
Industriestraße 2
27804 Berne/Germany
Phone +49 44 06 942-0
Fax +49 44 06 942-100
lifeboat@fassmer.de
www.fassmer.de