



RR 4.5 ID

Rigid Rescue Boat, inboard diesel driven



Fassmer Rescue Boats – fast all-rounders!

- Rescue Boat for Sea-going vessels
- GRP hull structure for heavy endurance operations
- inboard diesel engine with a maximum power of 27,8 kW (38 h.p.)
- max. LSA capacity 6 persons

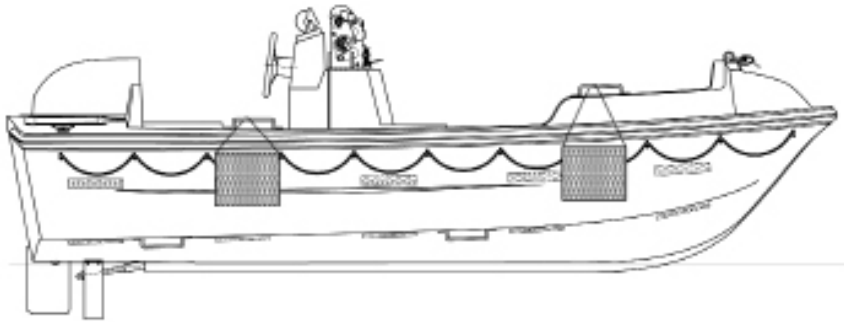
The boat is fully certified according to IMO/SOLAS standards.

RR 4.5 ID

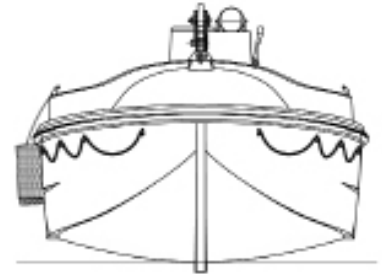
Rigid Rescue Boat, inboard diesel driven



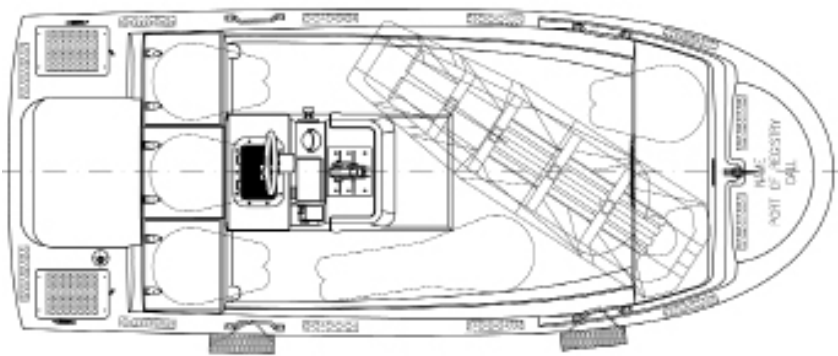
side view



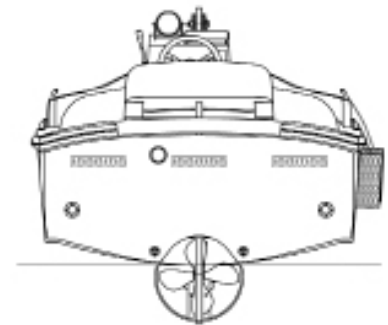
front view



top view



view from astern



Boat Type	Max. Capacity (Person)	Length (mm)	Width (mm)	Height (mm)	Weight (kg)
RR 4.5 ID	6	4550	1770	118	800

Engine Option (hp)	Speed (knots)	Towing Force (N)	Steering	Engine Start	Weight (kg)
29	6	2943	wheel	electric	800
38	7	3630	wheel	electric	830

Boat also available lifting slings instead of fixed release hook.
Weight reduction = 50 kg.

Fr. Fassmer GmbH & Co. KG
Industriestraße 2
27804 Berne/Germany
Phone +49 44 06 942-0
Fax +49 44 06 942-100
lifeboat@fassmer.de
www.fassmer.de