



RR 4.2

Rigid Rescue Boat, outboard driven



Fassmer Rescue Boats – fast all-rounders!

- Rescue Boat for sea-going vessels
- GRP hull structure for heavy endurance operations
- outboard petrol engines up to 44 kW (60 h.p.)
- max. LSA capacity 6 persons

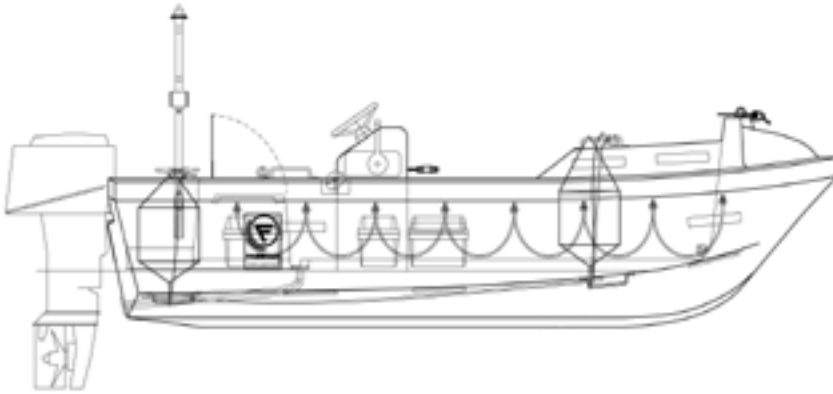
All boats are fully certified according to IMO/SOLAS standards.

RR 4.2

Rigid Rescue Boat, outboard driven



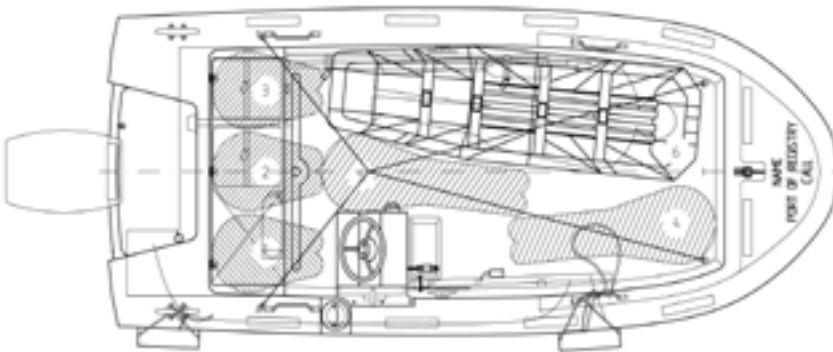
side view



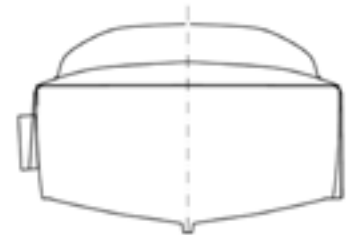
front view



top view



view from astern



Boat Type	Max. Capacity (Person)	Length (mm)	Width (mm)	Height (mm)	Weight (kg)
RR 4.2	6	4230	1750	820	450

Engine Option (hp)	Speed (knots)	Towing Force (N)	Steering	Engine Start	Weight (kg)
15	6	1472	tiller	manual	450
30	6	1765	tiller	manual	460
40	18	2850	wheel	electric	520
60	22	3630	wheel	electric	570

Fr. Fassmer GmbH & Co. KG
Industriestraße 2
27804 Berne/Germany
Phone +49 44 06 942-0
Fax +49 44 06 942-100
lifeboat@fassmer.de
www.fassmer.de