



PLL

Life- and Tender Boat

Fassmer Life- and Tender Boats – the powerful two-in-one!

- ship to shore and shore to ship
- spacious and comfortable tender operation
- LSA capacity as lifeboat up to 170 persons (PLT EVO 170)
- LSA capacity as tender boat 122 persons

All boats are fully certified according to IMO/SOLAS standards.



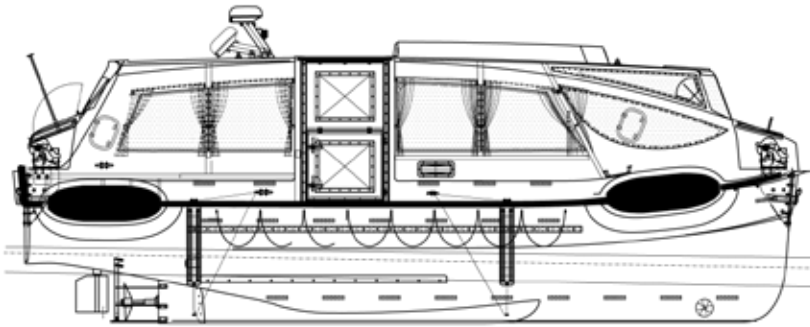
PLL

Life- and Tender Boat

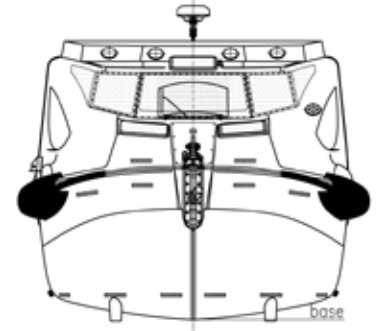


FASSMER

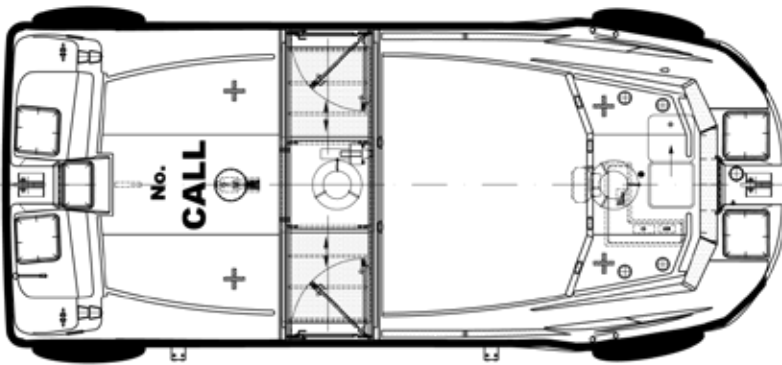
side view



front view



top view



view from astern



Boat Type	PLL 1099	PLT 1099 EVO
Length over fenders (mm)	11200	11200
Breadth of hull (mm)	4400	4400
Breadth over fender cushions (mm)	approx. 5000	approx. 5000
Total height in storage position max. (mm)	3800	4000
Hoisting hook distance (mm)	10350	10350
Weight without persons (kg)	10,250	11,500
Weight incl. 150/170 persons (kg)	21,500	24,250
Capacity at tender-service (persons)	up to 114	up to 122
Capacity at lifeboat-service (persons)	150	170
Speed at lifeboat-service (knots)	abt. 9	abt. 9
Speed at tender-service (knots)	up to 11	up to 10

Propulsion: Twin engine, water cooled diesel engine with reverse gear, bronze Propeller, stainless steel shaft, steering nozzle

Fr. Fassmer GmbH & Co. KG
Industriestraße 2
27804 Berne/Germany
Phone +49 44 06 942-0
Fax +49 44 06 942-100
lifeboat@fassmer.de
www.fassmer.de