



FRR

Fast Rigid Rescue Boat, inboard diesel driven



Fassmer Rescue and Fast Rescue Boats – fast all-rounders!

- rescue boat for ferries, cruise ships and offshore oil platforms
- integrated self-righting aid
- GRP hull structure for heavy endurance operations
- high speed in combination with a high LSA capacity

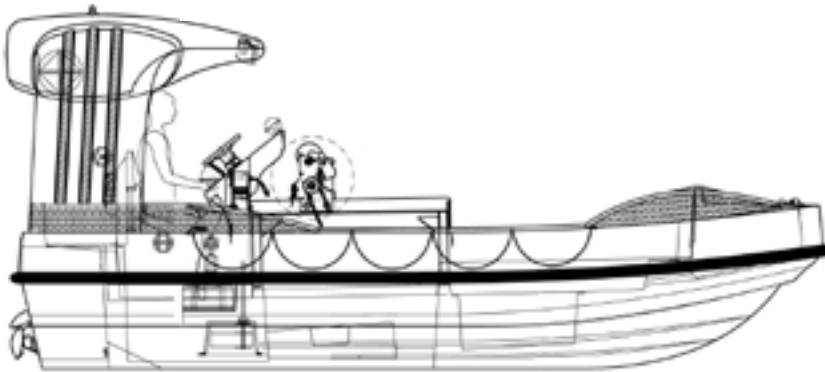
All boats are fully certified according to IMO/SOLAS standards.

FRR

Fast Rigid Rescue Boat, inboard diesel driven



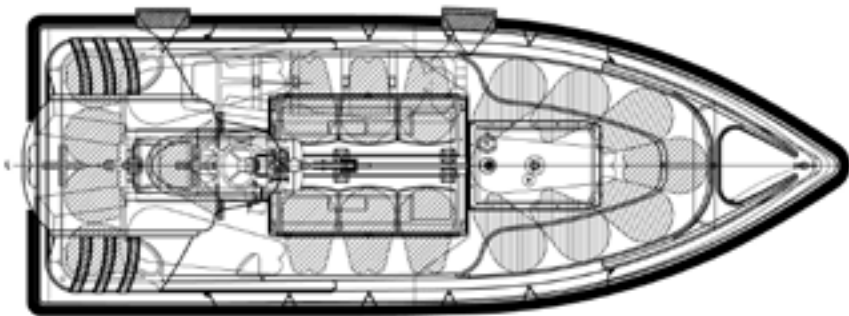
side view



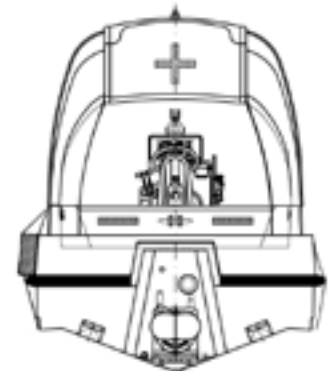
front view



top view



view from astern



Boat Type	FRR 6.2 ID	FRR 6.5 ID-SF	FRR 6.6 ID	FRR 7.0 ID-SF
Engine Option (hp)	144	236	144	236
Length over All (c/w fender) (mm)	6180	6460	6680	6960
Length moulded (mm)	6100	6100	6600	6600
Breadth over All (mm)	2260	2600	2260	2600
Breadth moulded (mm)	2140	2140	2140	2140
Height (to gunwale) (mm)	1050	1050	1050	1050
Max Height (mm)	2720	2720	2720	2720
Max No. of Persons	18	18	21	21
Certified for Persons	6	18	6	21
Basic weight (kg)*	1,800	1,900	1,900	2,000
Speed 3 persons (knots)*	26	33	24	33
Speed 6 persons (knots)*	22	30	20	30
Towing Force (N)	4,700	5,500	4,700	5,500

* 212 hp inboard diesel engine/waterjet for FRR 7.0 10 SF

Fr. Fassmer GmbH & Co. KG
Industriestraße 2
27804 Berne/Germany
Phone +49 44 06 942-0
Fax +49 44 06 942-100
lifeboat@fassmer.de
www.fassmer.de