



FRIR 625 Yacht version

Fast Rigid Inflatable Rescue Boat



Fassmer Yacht “rescue-boats” – fast all-rounders!

- serves as Crew tender or fast rescue boat
- GRP hull design for smooth seakeeping
- inboard diesel motor/waterjet propulsion secures a speed of up to 35 knots

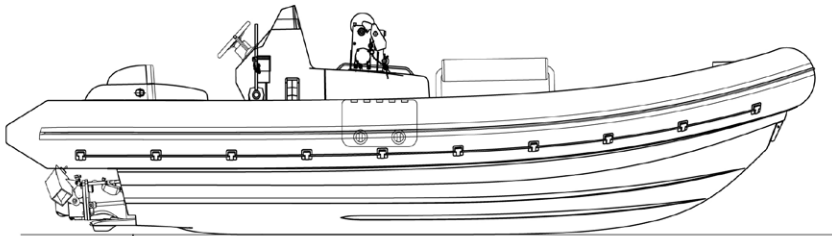
The boat is fully certified according to IMO/SOLAS standards.

FRIR 625 Yacht version

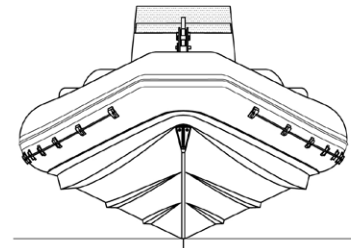
Fast Rigid Inflatable Rescue Boat



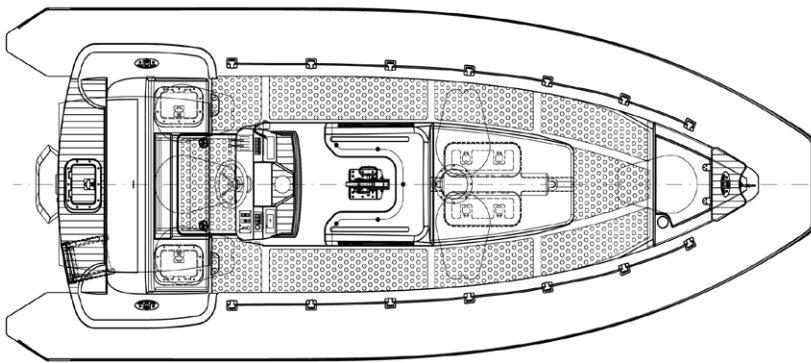
side view



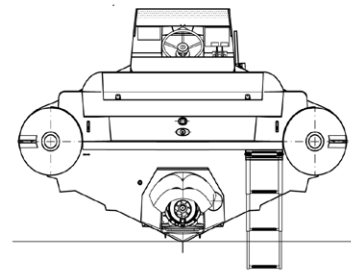
front view



top view



view from astern



Boat Type	FRIR 625 (Yacht)
Length (mm)	6250
Beam (mm)	2630
Weight (kg)	1,700
Payload (kg)	1,000
Engine	Inboard
Propulsion	Waterjet
Fuel	Diesel
Fuel tank (litre)	130
Speed with full payload (knots)	25
Speed with 3 pers. (knots)	35
Towing force (N)	6,500

Fr. Fassmer GmbH & Co. KG
Industriestraße 2
27804 Berne/Germany
Phone +49 44 06 942-0
Fax +49 44 06 942-100
lifeboat@fassmer.de
www.fassmer.de